



HANMAR



HANMAR

What does Hanmar do:

- production of beet knives,
- production of complete knife frames for drum and disc slicers,
- production of all spare parts for drum and disc slicers,
- renovations of drum and disc slicers

We provide a wide range of services for the sugar industry.



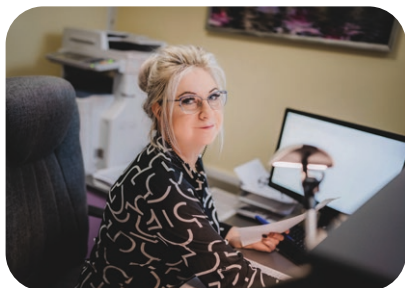
Hanmar started its operations in 1998. Interests and passions of its founder, Mariusz Becker, soon led to the extension of the company's services by professional machining of metals. This was the time when the enterprise developed very dynamically, giving a beginning for other changes - namely the services for the sugar industry.

Our operations are based on a tradition of a family business

- this is what makes us special and outstanding. After Mariusz Becker, the founder of the company, died, the vision for development of the company has been carried on by his daughter, Monika Becker, trying to follow the established paths and cultivate the values passed on by her father, so necessary in contacts with employees and customers.

Thanks to our professional and experienced staff

we could face our customers' expectations. We have been constantly working over development of our company, paying particular attention to the quality of services we provide. Each order is a new challenge for us, and we approach each customer individually. Our activities resulted in close cooperation with customers around the world, among others Europe, Scandinavia, North Africa and China.



Izabela Tłok
Customer service office

biuro@hanmar.info
+48 530 658 221



Our Team



Aneta Szóstek
Finacial Director

aneta.szostek@hanmar.info
+48 534 589 296



Tomasz Jankowski
Technical Director

tomasz.jankowski@hanmar.info
+48 601 547 801



Marek Wadowski
IT Director

informatyk@hanmar.info
+48 516 060 515



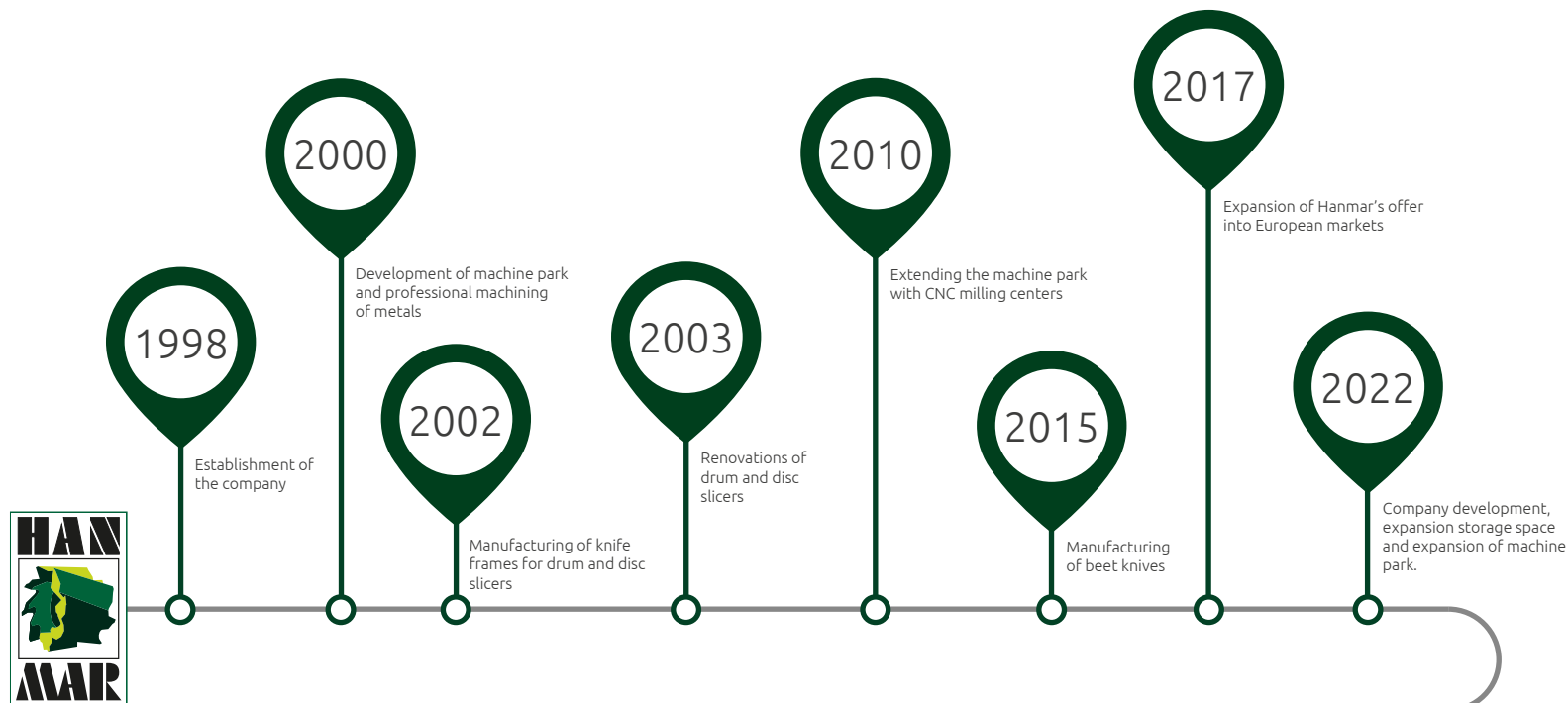
Adam Kaczmarek
General Export Manager

adam.kaczmarek@hanmar.info
+48 531 434 535



Łukasz Tarka
Production Coordinator

lukasz.tarka@hanmar.info
+48 669 098 570



HANMAR

PRODUCTION AND SALES OF BEET KNIVES

Hanmar Poland Sp. z o.o.

PRODUCTION AND SALES OF SPARE PARTS

Hanmar Product Sp. z o.o.

RENOVATIONS AND SERVICES OF SLICERS

Hanmar Service Sp. z o.o.



HANIMAR

B 2 0 25 7 M

Beet Knives

Beet Knives

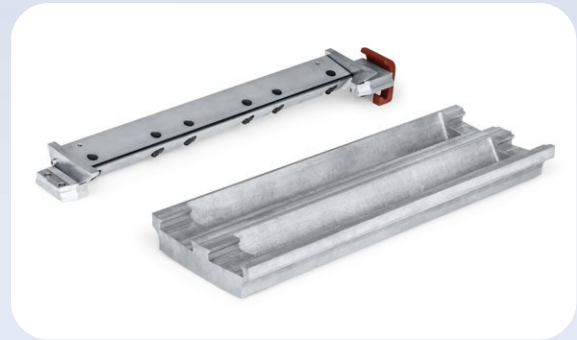
We use only the highest quality materials, characterized by very high strength and abrasion resistance. Facing out the requirements of our customers, the plant continuously works to improve the quality of our products.



We make all types of knives
not sandblasted or sandblasted.
Depending on customer's order.

ARTICLE ID	TYPE	PEAKS NUMBER	FIXING	CORNICES	LENGHT	WIDTH	SHANK THICKNESS	HEIGHT	SUBSTITUTE
A1023 7	A	23	8,69	X	200	87	7,0-7,2	10,9-11,0	1-TV-200-23-7A,1-S-200-23-7A
B1023 7	B	23	8,69	X	200	87	7,0-7,2	10,9-11,0	1-TV-200-23-7B,1-S-200-23-7B
A1023 9	A	23	8,69	X	200	89	7,0-7,2	10,9-11,0	EQ/RG/200x89/23A-DA
B1023 9	B	23	8,69	X	200	89	7,0-7,2	10,9-11,0	EQ/RG/200x89/23B-DA
A2023 7	A	23	8,69	-	200	87	7,0-7,2	10,9-11,0	1-T-200-23-7A
B2023 7	B	23	8,69	-	200	87	7,0-7,2	10,9-11,0	1-T-200-23-7B
A2023 9	A	23	8,69	-	200	89	7,0-7,2	10,9-11,0	EDB/TPE/200x89/23A-DA
B2023 9	B	23	8,69	-	200	89	7,0-7,2	10,9-11,0	EDB/TPE/200x89/23B-DA
A1025 7	A	25	8	X	200	87	7,0-7,2	10,7-10,9	1-TV-200-25-7A,1-S-200-25-7A
B1025 7	B	25	8	X	200	87	7,0-7,2	10,7-10,9	1-TV-200-25-7B,1-S-200-25-7B
A1025 9	A	25	8	X	200	89	7,0-7,2	10,7-10,9	EQ/RG/200x89/25A-DA
B1025 9	B	25	8	X	200	89	7,0-7,2	10,7-10,9	EQ/RG/200x89/25B-DA
A2025 7	A	25	8	-	200	87	7,0-7,2	10,7-10,9	1-T-200-25-7A
B2025 7	B	25	8	-	200	87	7,0-7,2	10,7-10,9	1-T-200-25-7B
A2025 9	A	25	8	-	200	89	7,0-7,2	10,7-10,9	EDB/TPE/200x89/25A-DA
B2025 9	B	25	8	-	200	89	7,0-7,2	10,7-10,9	EDB/TPE/200x89/25B-DA
A1027 7	A	27	7,41	X	200	87	7,0-7,2	10,6-10,8	1-TV-200-27-7A,1-S-200-27-7A
B1027 7	B	27	7,41	X	200	87	7,0-7,2	10,6-10,8	1-TV-200-27-7B,1-S-200-27-7B
A1027 9	A	27	7,41	X	200	89	7,0-7,2	10,6-10,8	EQ/RG/200x89/27A-DA
B1027 9	B	27	7,41	X	200	89	7,0-7,2	10,6-10,8	EQ/RG/200x89/27B-DA
A2027 7	A	27	7,41	-	200	87	7,0-7,2	10,6-10,8	1-T-200-27-7A
B2027 7	B	27	7,41	-	200	87	7,0-7,2	10,6-10,8	1-T-200-27-7B
A2027 9	A	27	7,41	-	200	89	7,0-7,2	10,6-10,8	EDB/TPE/200x89/27A-DA
B2027 9	B	27	7,41	-	200	89	7,0-7,2	10,6-10,8	EDB/TPE/200x89/27B-DA
A1028 7	A	28	7,14	X	200	87	6,0-6,2	10,4-10,6	1-TV-200-28-6A,1-S-200-28-6A
B1028 7	B	28	7,14	X	200	87	6,0-6,2	10,4-10,6	1-TV-200-28-6B,1-S-200-28-6B
A1028 9	A	28	7,14	X	200	89	6,0-6,2	10,4-10,6	EQ/RG/200x89/28A-DA
B1028 9	B	28	7,14	X	200	89	6,0-6,2	10,4-10,6	EQ/RG/200x89/28B-DA
A2028 7	A	28	7,14	-	200	87	6,0-6,2	10,4-10,6	1-T-200-28-6A
B2028 7	B	28	7,14	-	200	87	6,0-6,2	10,4-10,6	1-T-200-28-6B
A2028 9	A	28	7,14	-	200	89	6,0-6,2	10,4-10,6	EDB/TPE/200x89/28A-DA
B2028 9	B	28	7,14	-	200	89	6,0-6,2	10,4-10,6	EDB/TPE/200x89/28B-DA

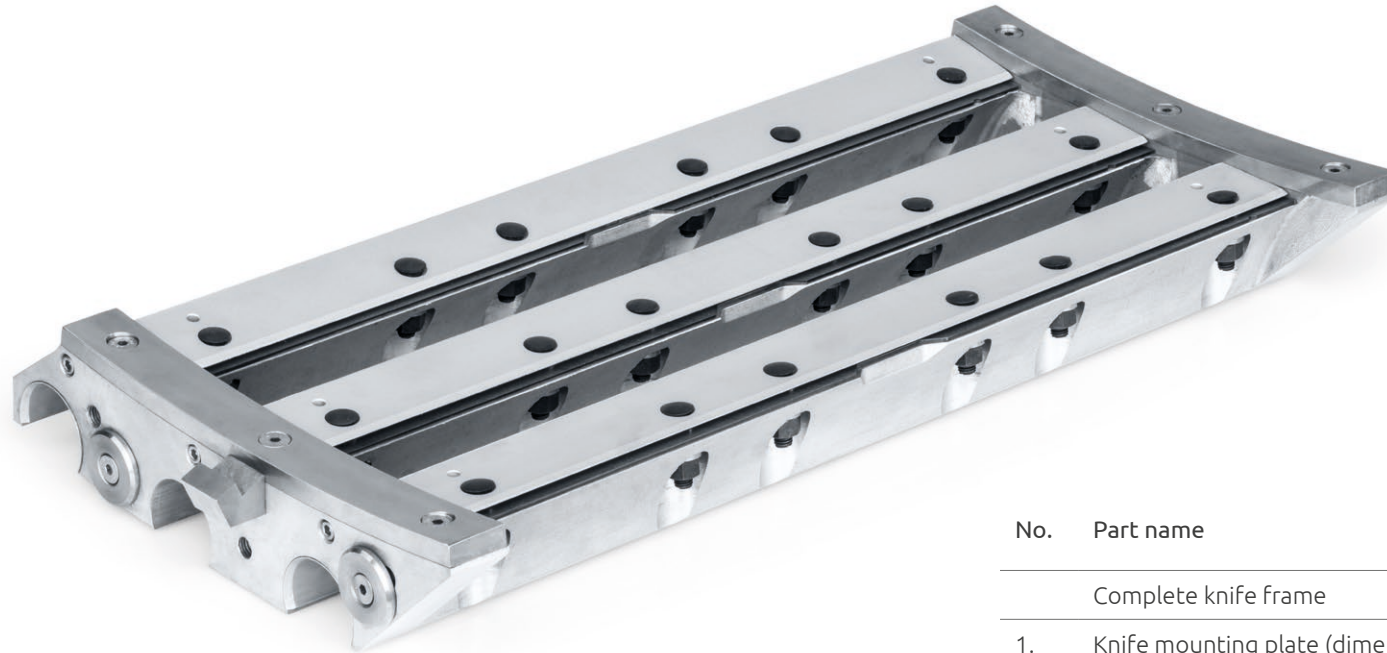




Knife Frames

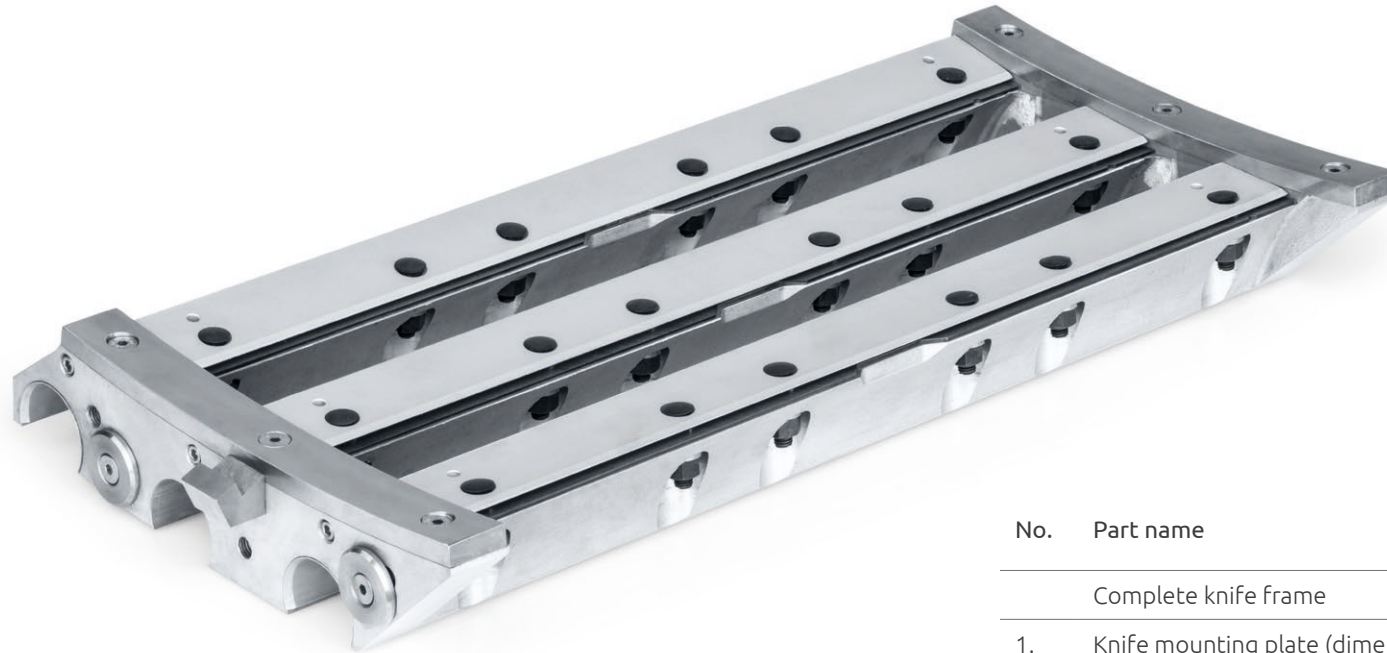
we produce all types of knife frames

The frames are customizable at the customer's request. We do everything types of caps, washers and quarter rounds.



Knife Frame
HANMAR HR-N-22-1
 Substitute: TSM 2200 x 22 x 600

No.	Part name	Symbol HANMAR
	Complete knife frame	HR-N-22-1
1.	Knife mounting plate (dimension should be given at placing an order)	HR-N-22-2
2.	Side arc molding (dimension should be given at placing an order)	HR-N-22-3
3.	Knife pad	HR-N-22-4
4.	Rod adjusting the height of the shear bar (dimension should be given at placing an order)	HR-N-22-5
5.	Hook (gripper)	HR-N-22-6
6.	Aluminum guide	HR-N-22-7
7.	Bumper	HR-N-22-8
8.	Knife mounting screw M10x45	HR-N-22-9/a
9.	Cup washer	HR-N-22-9/b
10.	Half - round nut M10	HR-N-22-9/c
11.	Cotter pin 2.5x16	HR-N-22-9/d



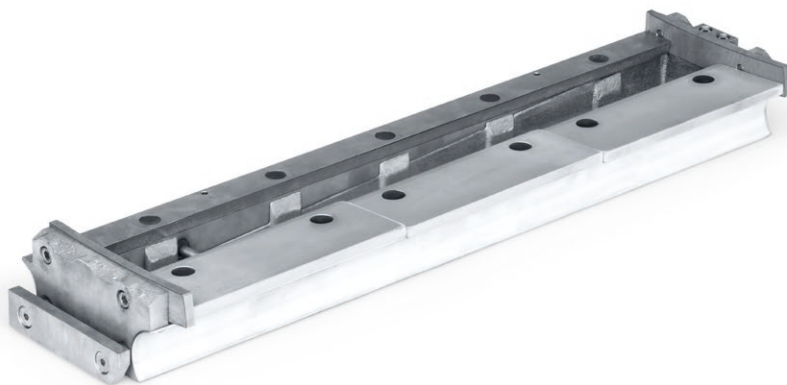
Knife Frame

HANMAR HR-N-18-1

Substitute: TSM 1800 x 18 x 600



No.	Part name	Symbol HANMAR
	Complete knife frame	HR-N-18-1
1.	Knife mounting plate (dimension should be given at placing an order)	HR-N-18-2
2.	Side arc molding (dimension should be given at placing an order)	HR-N-18-3
3.	Knife pad	HR-N-18-4
4.	Rod adjusting the height of the shear bar (dimension should be given at placing an order)	HR-N-18-5
5.	Hook (gripper)	HR-N-18-6
6.	Aluminum guide	HR-N-18-7
7.	Bumper	HR-N-18-8
8.	Knife mounting screw M10x45	HR-N-18-9/a
9.	Cup washer	HR-N-18-9/b
10.	Half - round nut M10	HR-N-18-9/c
11.	Cotter pin 2.5x16	HR-N-18-9/d



Knife Frame
HANMAR HR-N-20-1
 Substitute: TSM 2000 x 40 x 600

No.	Part name	Symbol HANMAR
	Knife frame	HR-N-20-1
1.	Knife mounting plate	HR-N-20-2
2.	Shearbar	HR-N-20-3
3.	Right side arch molding	HR-N-20-4
4.	Left side arch molding	HR-N-20-5
5.	Wedge adjusting the height of the shearbar (dimension should be given at placing an order)	HR-N-20-6
6.	Grip side strip	HR-N-20-7
7.	Hitch spacer	HR-N-20-8
8.	Washer for the spacer sleeve	HR-N-20-9
9.	Slatted cube	HR-N-20-10
10.	Overlay of the mounting guide (aluminum)	HR-N-20-11
11.	M4 threaded insert	HR-N-20-12
12.	M4x12 screw	HR-N-20-13
13.	Knife mounting screw M10x45	HR-N-20-14/a
14.	Washer Ø10,5	HR-N-20-14/b
15.	M10 /s13 flange nut	HR-N-20-14/c
16.	Cotter pin 2.5x16	HR-N-20-14/d



Knife Frame

HANMAR HR-N-16-1

Substitute: TSM 1600 x 42 x 600

No.	Part name	Symbol HANMAR
	Cutter bar socket	HR-N-G-16-1
1.	Cutter bar	HR-N-16-1
2.	Knife pad (j/w)	HR-N-16-3
3.	Right side trapezoidal ankle	HR-N-16-4
4.	Left side trapezoidal ankle	HR-N-16-5
5.	Hook (gripper)	HR-N-16-6
6.	Beveled end plate (dimension should be given at placing an order)	HR-N-16-7
7.	Shearbar height adjustment rod (dimension should be given at placing an order)	HR-N-16-8
8.	Knife mounting screw M10x45	HR-N-16-9/a
9.	Cup washer	HR-N-16-9/b
10.	Half-round nut M10	HR-N-16-9/c
11.	Cotter pin 2.5x16	HR-N-16-9/d



Knife Frame
HANMAR HR-F-20-1
Substitute: CRT 2000 x 60 x 600



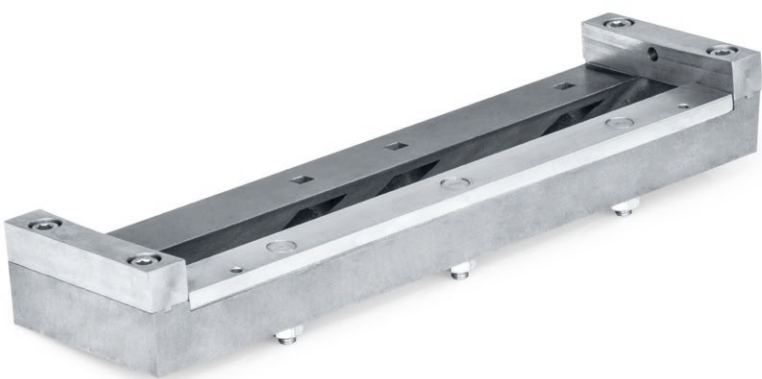
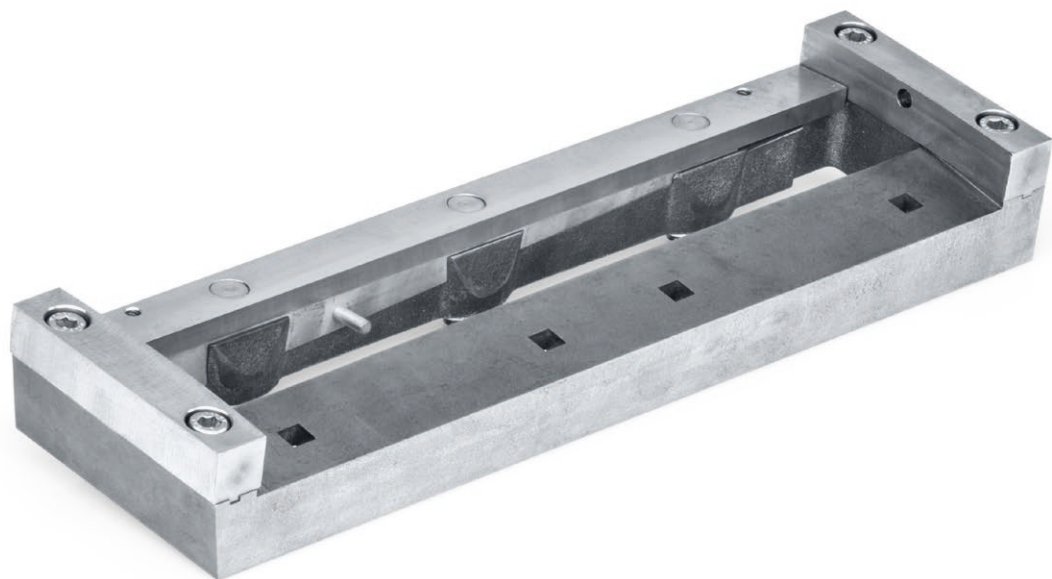
No.	Part name	Symbol HANMAR
	Knife frame	HR-F-20-1
1.	Knife mounting plate with V-blocks - type C	HR-F-20-2/C
2.	Knife mounting plate with V-blocks - type D	HR-F-20-2/D
3.	Knife mounting plate without prisms - type N	HR-F-20-2/N
4.	Right side arched strip - locking	HR-F-20-3
5.	Left side arch molding	HR-F-20-4
6.	Hitch bar	HR-F-20-5
7.	Wedge adjusting the height of the shearbar - type B	HR-F-20-9/B
8.	Wedge adjusting the height of the shearbar - type C	HR-F-20-9/C
9.	Wedge adjusting the height of the shearbar - type D	HR-F-20-9/D
10.	Wedge adjusting the height of the shearbar - type E	HR-F-20-9/E
11.	Locking mechanism pin	HR-F-20-10
12.	Locking mechanism sleeve	HR-F-20-11
13.	Thrust washer	HR-F-20-12
14.	Nose screw for attaching knives	HR-F-20-13/a
15.	High nut M10	HR-F-20-13/b
16.	Washer Ø10,5	HR-F-20-13/c
17.	Spring sleeve	HR-F-20-13/d
18.	Knife mounting screw M10x45	HR-F-20-13/a/N
19.	Half-round nut M10	HR-F-20-13/b/N
20.	Cup washer	HR-F-20-13/c/N
21.	Cotter pin 2.5x16	HR-F-20-13/d/N

When placing an order, specify the layout of the guides and the material for the guides.



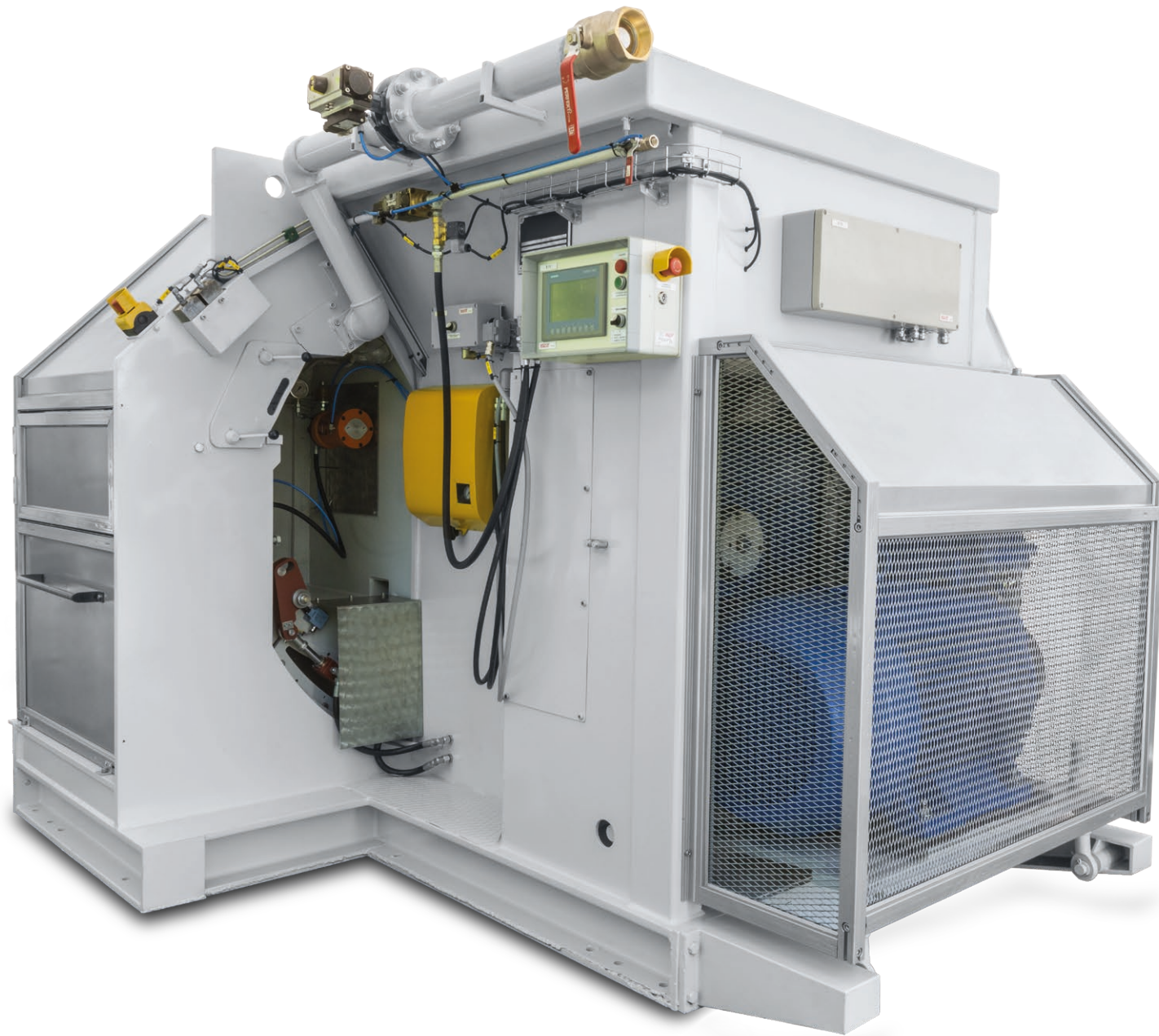
Knife Frame
HANMAR HR-F-16-1
 Substitute: CRT 1600 x 32 x 600

No.	Part name	Symbol HANMAR
	Knife frame	HR-F-16-1
1.	Knife attachment plate	HR-F-16-2
2.	Side arch molding	HR-F-16-3
3.	Hitch bar	HR-F-16-4
4.	Locking mechanism pin	HR-F-16-5
5.	Locking mechanism sleeve	HR-F-16-6
6.	Expansion pin Ø4x30	HR-F-16-7
7.	Locking mechanism spring	HR-F-16-8
8.	Shelter	HR-F-16-9
9.	Nose screw for attaching knives	HR-F-16-13/a
10.	High nut M10	HR-F-16-13/b
11.	Washer Ø10.5	HR-F-16-13/c
12.	Spring sleeve	HR-F-16-13/d



Knife Frame
HANMAR HR-T-N-22
 Substitute: SM 2200 x 24 x 600

No.	Part name	Symbol HANMAR
	Knife frame	HR-T-N-22-1
1.	Shelter	HR-T-N-22-2
2.	Wedge adjusting the height of the shear bar (dimension should be given at placing an order)	HR-T-N-22-4
3.	Nose screw for fixing the shear bar	HR-T-N-22-5
4.	Lateral malleolus convex	HR-T-N-22-8
5.	Lateral ankle concave	HR-T-N-22-9

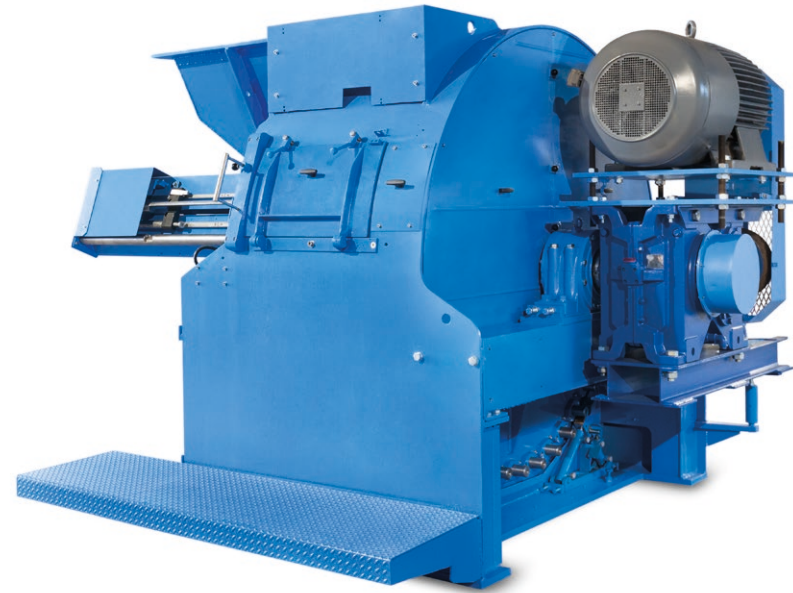


We perform renovations of drum and disc slicers.

All works are carried out by Hanmar experienced employees, and this guarantees top quality of the performed works along with compliance with both the national and European standards. Actions and knowledge of our staff guarantee reliability of the renovated machinery, and thus the satisfaction of our customers.

A renovation may include:

- renovation and replacement of all mechanic parts and components,
- renovation and replacement of hydraulic parts and components,
- renovation or replacement of drive and control system with a new model with higher parameters,
- renovation of the electric system.



Hanmar is a leader in renovation and maintenance of machinery used in the sugar industry.

Our experienced team can cope with any malfunction, allowing our customers to expect what follows:

- professional staff knowing the industry,
- a maintenance team carefully selected to suit the malfunction,
- quick response to our customers' problems.

The scope of machinery maintenance includes first of all:

- mechanical service,
- control electronics service,
- machine drives service,
- power supply systems service,
- etc.



HANMAR

Dworcowa 26 street
87-140 Chełmża
Poland

tel. +48 56 300 00 62
biuro@hanmar.info
www.hanmar.info